

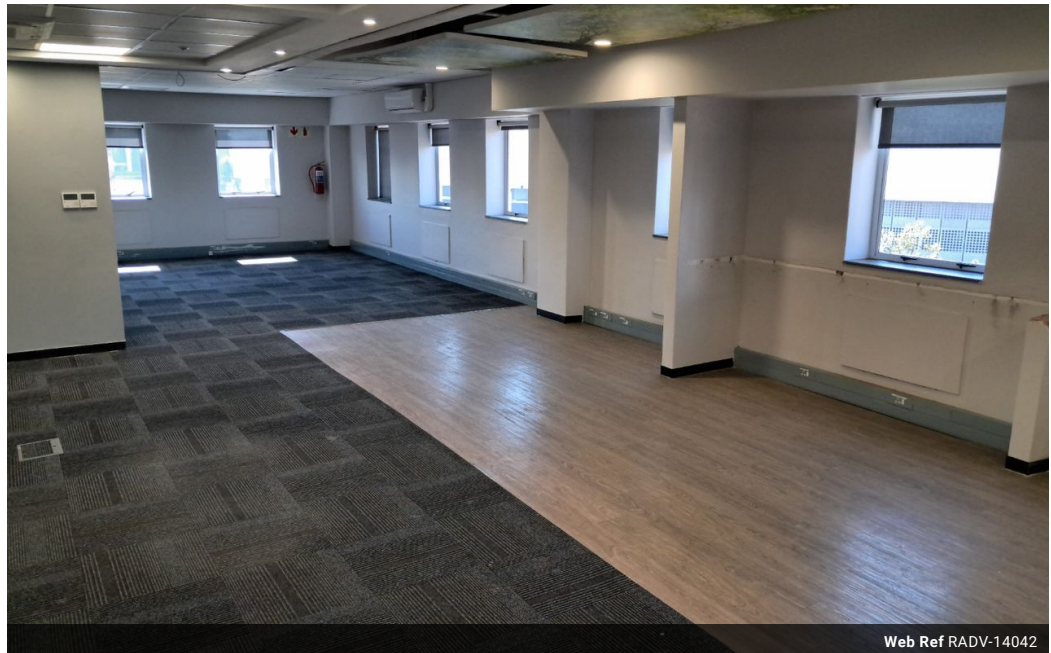


Kate Shimwell
082 493 0273
kate@remax-
advantage.co.za

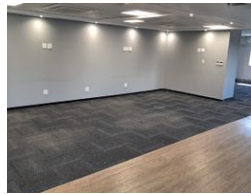
Contact RE/MAX-Advantage
(Rosebank)

011 4476763

247 Jan Smuts Avenue, Dunkeld West 2196



Web Ref RADV-14042



R24,640 pm

Gross Monthly Rental R24,640 Excl. VAT

0 0

Commercial Property To Rent in Rosebank, Johannesburg

224sqm of fitted-out office space situated on Jan Smuts avenue in Rosebank. This strategically positioned, four-story building provides secure, ground and basement-level parking with 24/7 security, ensuring peace of mind for both tenants and visitors. Located within walking distance of the Gautrain Station, Rosebank Corner is designed to meet the demands of modern business environments. 3 Closed off work pods within the office space where employees can comfortably...

Features

Zoning Commercial

Sizes

Floor Size	224m ²
Land Size	224m ²