

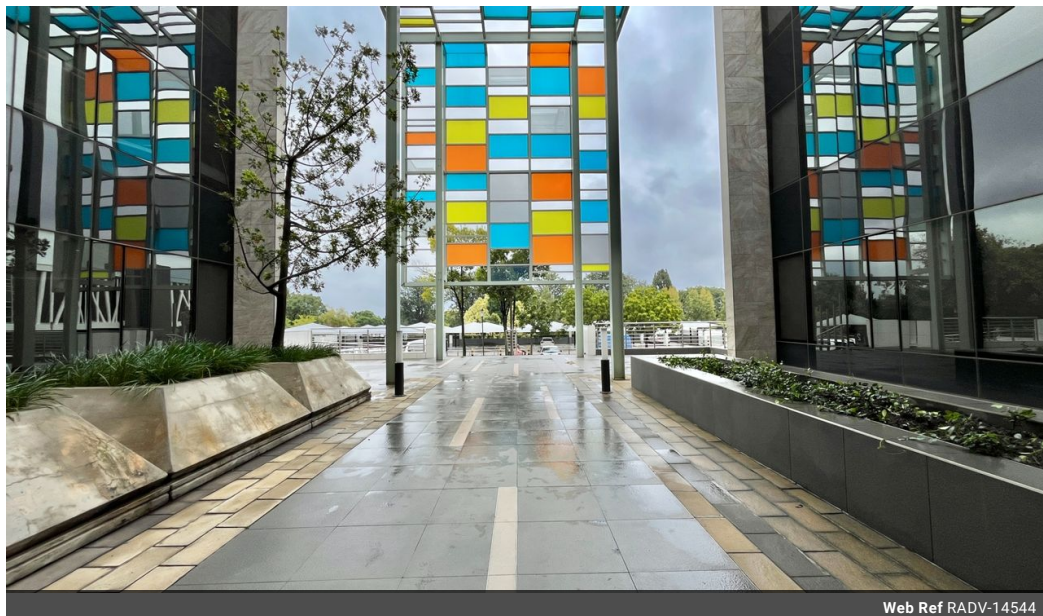


**Kate Shimwell**  
082 493 0273  
kate@remax-  
advantage.co.za

Contact RE/MAX-Advantage  
(Rosebank)

011 4476763

247 Jan Smuts Avenue, Dunkeld West 2196



Web Ref RADV-14544



R135,605 pm

Gross Monthly Rental R135,605 Excl. VAT



0



0

### Commercial Property To Rent in Bryanston, Sandton

**Bryanston Sandton, 2929 on Nicol Office Park** is a premier commercial property, offering businesses a prestigious and functional workspace. This office park provides an exceptional blend of convenience, modern amenities, and sustainability, making it an ideal choice for discerning businesses.

**This office complex is situated with easy access from the N1 Highway and main arterials leading directly through Johannesburg and Sandton and next to Nicolway Shopping centre.**

**Impressive receptions with Concierge personnel to guide you to the offices these buildings have high security functions and luxury appeal.**

Key features of this P Grade Office park include:

### Features

**Zoning** Commercial

**Sizes**

Floor Size 733m<sup>2</sup>  
Land Size 733m<sup>2</sup>