

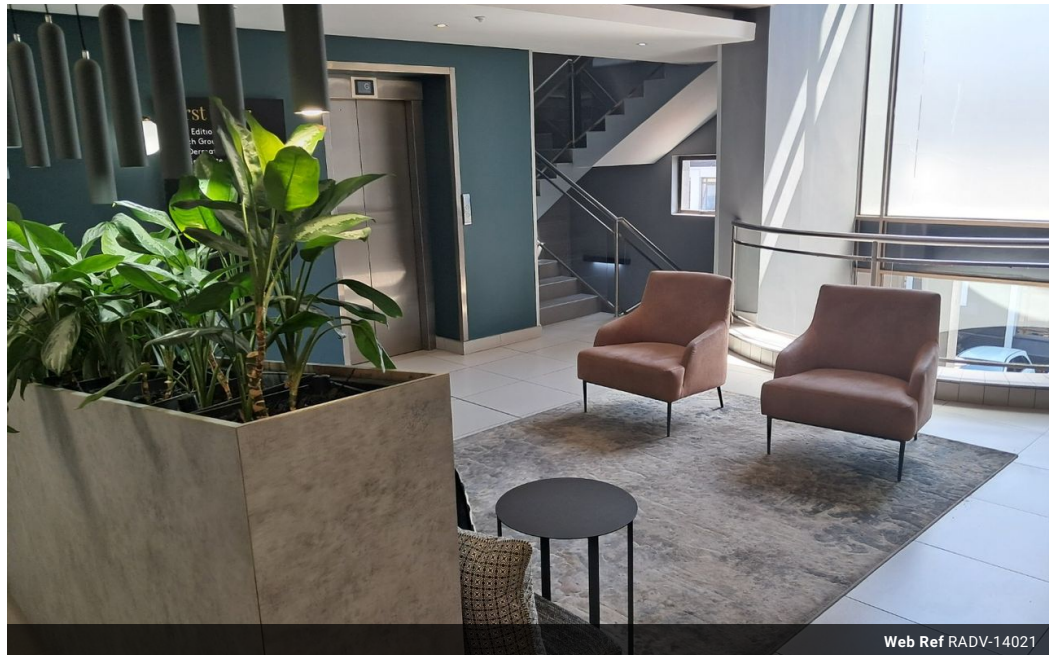


Kate Shimwell
082 493 0273
kate@remax-
advantage.co.za

Contact RE/MAX-Advantage
(Rosebank)

011 4476763

247 Jan Smuts Avenue, Dunkeld West 2196



Web Ref RADV-14021



R pm

0 0

Commercial Property To Rent in Hyde Park, Sandton

181sqm Office to let in Grosvenor Gate Hyde Park Lane in Hyde Park Sandton which is an office park consisting of various two-story buildings, landscaped gardens, and a coffee kiosk, centrally located at the intersection of Jan Smuts Avenue and William Nicol Drive. The park boasts an elegant architectural design, creating a professional environment with great security and a welcoming address. The Hyde Park Corner Shopping Centre is located across the road, and Sandton City and Rosebank are a short drive away. The park offers fiber internet connectivity, a great corporate image, and a great opportunity to lease office space within the nonular node

Features

Zoning Commercial

Sizes

Floor Size 181m²
Land Size 181m²