

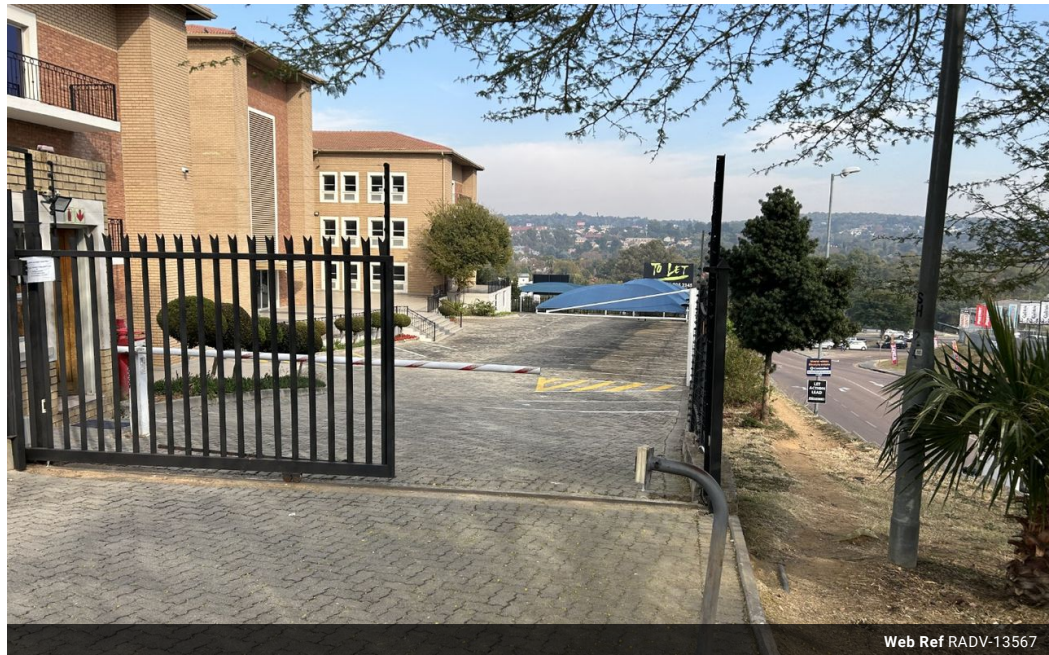


Rainer Schulz
083 777 3745
rainer@remax-
advantage.co.za

Contact RE/MAX-Advantage
(Rosebank)

011 4476763

247 Jan Smuts Avenue, Dunkeld West 2196



Web Ref RADV-13567



R pm

0 0

Commercial Property To Rent in Sunninghill, Sandton

The building comprises offices on the ground, first and second floors. Each floor is divided into two wings (East and West) of equal size off a central lobby with both stairway & elevator access. Each wing has small balcony area whilst the ground floor has a large balcony for each wing.

There is basement parking and storage, as well as both shadenet and open parking.

The property is secured and access controlled, has access to fibre and is supported by a back-up generator.

The building faces onto Naivasha road directly opposite The Square shopping centre and also offers visibility onto Rivonia Road. It is in close proximity to the N1 highway and...

Features

Zoning Commercial

Sizes
Floor Size 3,356m²